



OAKFIELD



ROMAT

24

evolution
cycles

evocycles.co.uk
01323 737320

Meads Street, Eastbourne
£1,900 Per Calendar Month



3



2



2



SUMMARY

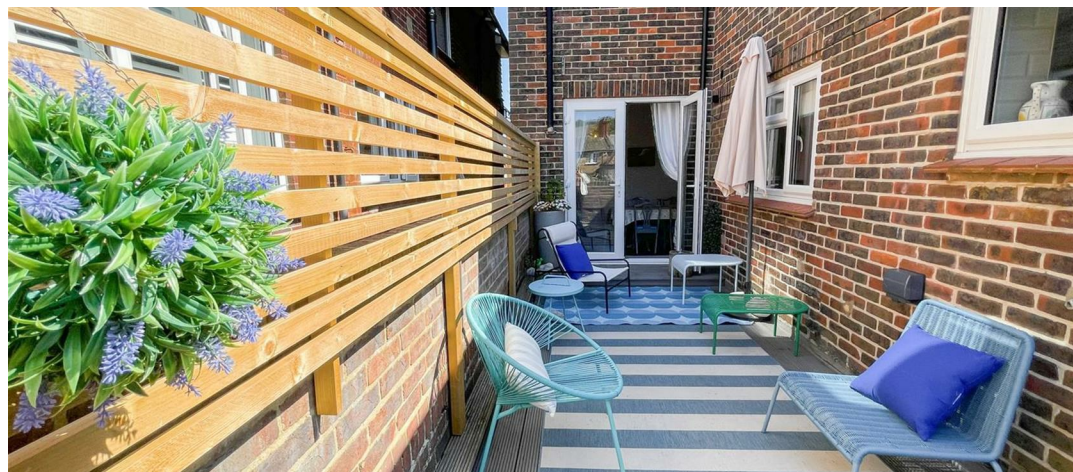
Nestled in the highly sought-after Meads area, this beautifully presented three-bedroom maisonette offers a rare opportunity to enjoy both character and style in one of the town's most desirable locations.

The property boasts a wealth of charm, with stylish interiors that blend modern convenience with period features. Set over two floors, it provides generous living space, including a bright and airy lounge, a well-designed kitchen with integrated appliances, and three comfortable bedrooms. The separate dining room flows seamlessly onto a private terrace, perfect for entertaining or enjoying alfresco dining.

The maisonette is offered fully furnished, making it an ideal turn-key home, perfect for professionals, families, or as a high-quality rental investment. With appliances included, you can move in and immediately enjoy the comfort and practicality of this stunning residence.

Located in picturesque Meads, you'll benefit from easy access to local shops, the seafront, and scenic downland walks, while also being within close reach of excellent schools and transport links.

This property combines elegance, practicality, and an enviable location – a truly unique home not to be missed.



Please note:

An annual household income of £57,000 per annum is required

The tenancy will begin with a 12 month initial term

Appliances Include:

- Oven
- Hob
- Fridge Freezer
- Washing Machine
- Tumble Dryer
- Dish Washer
- Microwave
- Crockery available
- ALL FURNISHINGS AS PER PHOTOGRAPHS



Kitchen

11'1" x 14'5"

Dining Room

12'9" x 12'1"

Living Room

12'1" x 17'4"

Bathroom

12'1" x 6'2"

Bedroom One

12'1" x 17'4"

Bedroom Two

12'9" x 11'1"

Bedroom Three

12'9" x 5'6"

W/C

3'3" x 3'3"

Council Tax Band C - £2,251.10 per anum













INFORMATION

Tenure

Local Authority

Eastbourne

Council Tax Band

C

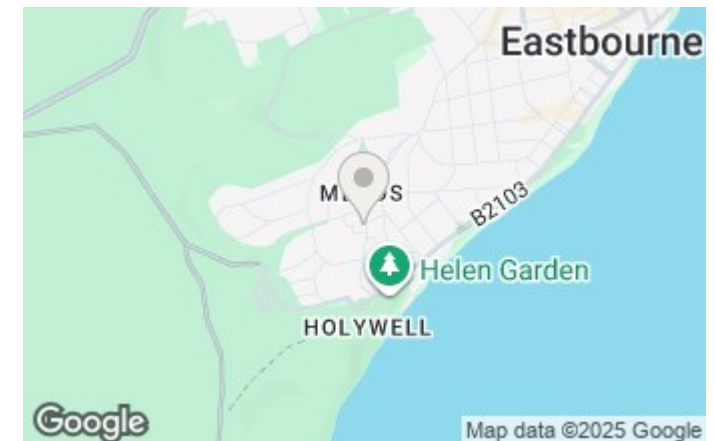
Opening Hours

Monday to Friday	9.00am - 5.30pm
Saturday	9.00am - 4.00pm

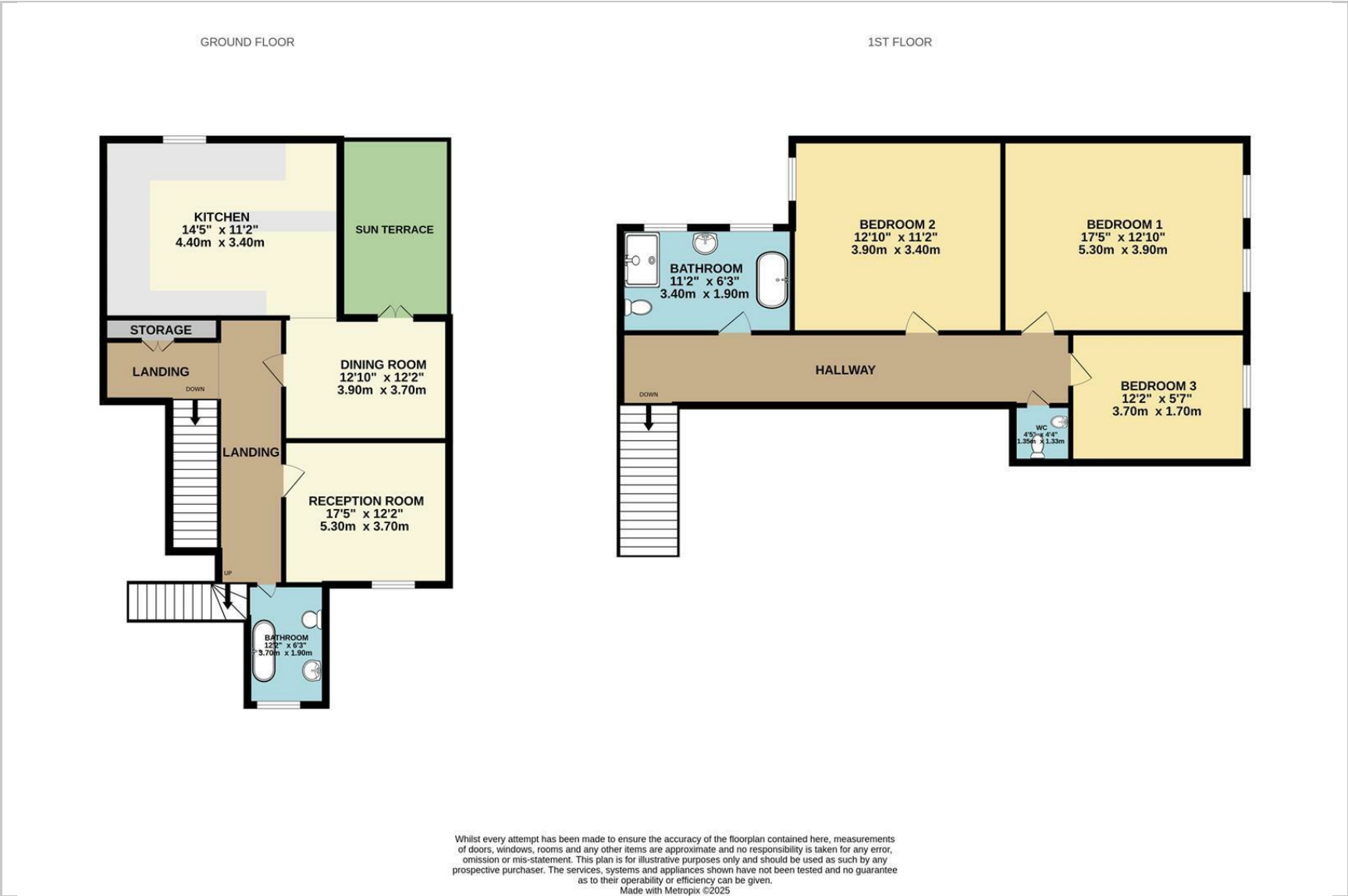
Viewings

Please contact us on 01323 405553 if you wish to arrange a viewing appointment for this property or require further information.

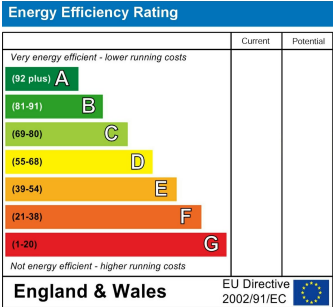
Area Map



Floorplan



Energy Efficiency Graph



These particulars, whilst believed to be accurate are set out as a general outline only for guidance and do not constitute any part of an offer or contract. Intending purchasers should not rely on them as statements of representation of fact, but must satisfy themselves by inspection or otherwise as to their accuracy. No person in this firms employment has the authority to make or give any representation or warranty in respect of the property.